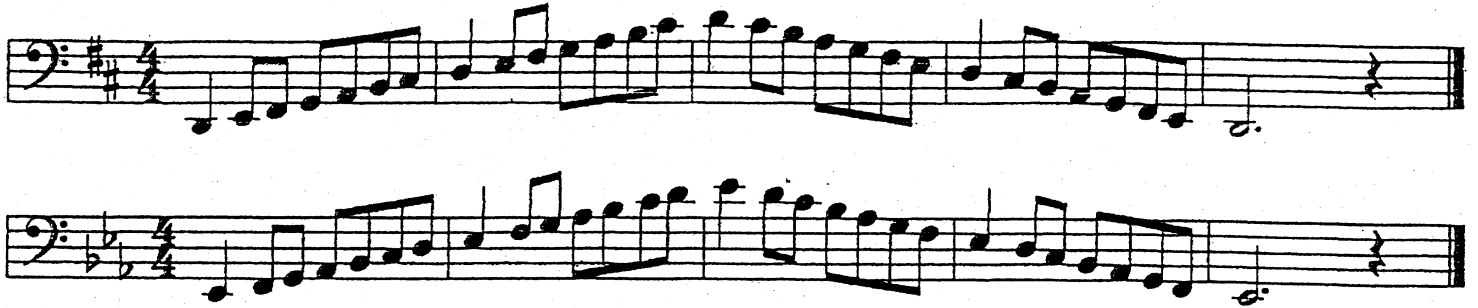



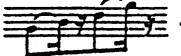


SALEM YOUTH SYMPHONY
PHILHARMONIA AUDITION MATERIAL
TROMBONE

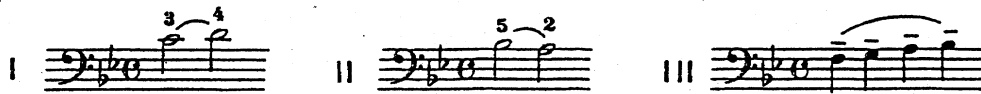


Studies in Articulation

In all exercises where no tempo is indicated the student should play the study as rapidly as is consistent with tonal control and technical accuracy. The first practice on each exercise should be done very slowly in order that the articulation may be carefully observed.

In allegro tempi figures similar to  should be performed  etc. The figure  should be played .

The slur is a difficult articulation on the slide trombone. Whenever possible the motion of the slide should be outward when playing an ascending slurred passage (Ex.I) and inward when playing a descending slurred passage (Ex.II).



When it is not possible to move the slide as recommended above, the tones under the slur should be tongued as lightly as possible, fully sustained, and free of any trace of glissando. See Ex.III.



CHECK OTHER SIDE FOR ADDITIONAL MATERIAL

Berceuse

Solo Trombone F
or Baritone

OSKAR BÖHME, Op. 7

Andante

6 $\frac{4}{4}$ p

Piu mosso *rit.* *a tempo*

cresc. p fz

fz p

pp 3

rall. 3 3 pp

ppp *dim.* *ppp*

SIGHT READING