

Salem Youth Symphony Association

Mozart Players • Amadeus Players • Philharmonia • Youth Symphony

Youth Symphony Trombone Audition Material

Scales – E Major Scale & F Major Scale (two octaves)

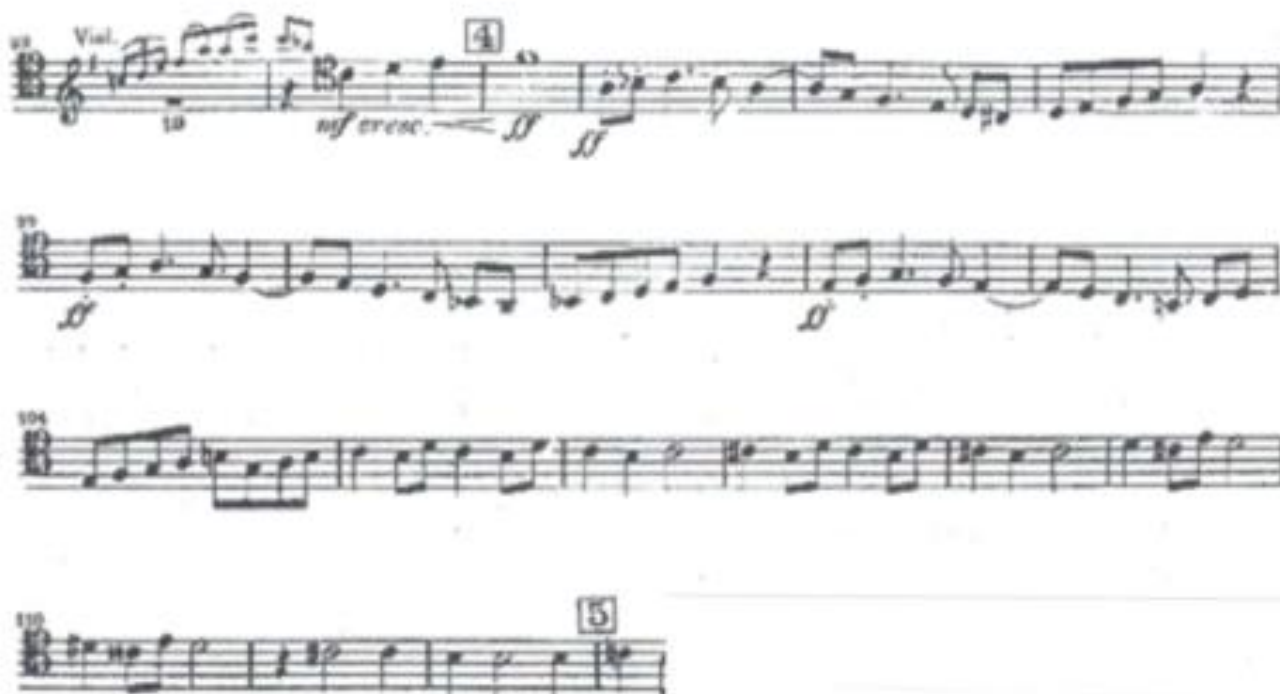


Chromatic Scale – (not pictured)

Tenor Trombone: E below the staff to high Bb above the staff

Bass Trombone: low D below staff to F above the staff

Excerpt # 1 - Berlioz Hungarian March



Excerpt #2 – Technical Etude

Musical score for Excerpt #2 – Technical Etude, bass clef, 4/4 time, key of D major. The tempo is marked $\text{♩} = 100$. The score consists of five staves of music. The first staff begins with a dynamic marking of *f*. The second staff starts at measure 5. The third staff starts at measure 8 and includes a triplet of eighth notes and a dynamic marking of *mp*. The fourth staff starts at measure 12 and includes a dynamic marking of *f* and a triplet of eighth notes. The fifth staff starts at measure 15 and includes a triplet of eighth notes. The piece concludes with a double bar line.

Excerpt #3 – Lyrical Etude

Musical score for Excerpt #3 – Lyrical Etude, bass clef, 4/4 time, key of D major. The tempo is marked $\text{♩} = 84$ and the articulation is marked *Legato*. The score consists of five staves of music. The first staff begins with a dynamic marking of *mf*. The second staff starts at measure 5 and includes a dynamic marking of *f*. The third staff starts at measure 9 and includes a dynamic marking of *mp*, a triplet of eighth notes, and a dynamic marking of *cresc.*. The fourth staff starts at measure 13 and includes a dynamic marking of *cresc. poco a poco*. The fifth staff starts at measure 16 and concludes with a double bar line.

Be Prepared for Sightreading